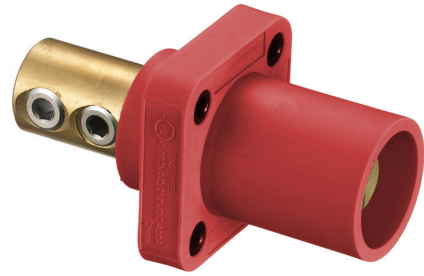


**Heavy Duty Products, Single Pole Devices, Industrial Grade, Male, Receptacle, 300/400A 600V AC/DC, Single Conductor, Set Screw, Red**



By Hubbell Wiring Device-Kellems  
Catalog # [HBLMRR](#)

Heavy Duty Products, Single Pole Devices, Industrial Grade, Male, Receptacle, 300/400A 600V AC/DC, Single Conductor, Set Screw, Red

**Features**

- Industrial Grade
- Male
- Receptacle

**Application**

High Ampacity Connections

**Performance**

Electrical - Amperage Rating - 400A Maximum, Electrical - Voltage Ratings - 600V AC Maximum, 250V DC Maximum, Environmental - Flammability - HB per UL94 or CSA 22.2. 0.17, Mechanical - Product Identification - Ratings are a permanent part of device, Mechanical - Terminal Accommodation - #4 to 4/0 AWG

**Specifications**

Environmental Conditions	Indoor Dry Unless Protected By Additional Means
EU RoHS Indicator	Yes
Nema Rating	Non-NEMA
Industry Standard(s)	<ul style="list-style-type: none"> <li>• National Electric Code (NEC), ANSI/NFPA 70</li> <li>• UL and cUL Listed</li> <li>• UL Enclosure Types 3R, 4X, 12</li> </ul>

**Conductor**

Wire Size	#4 AWG to #4/0 AWG
Number Of Poles	1-Pole

**Current**

Amperage Rating	400 A
-----------------	-------

Voltage Rating Description	600V AC/DC
Current Rating	400 A
Wattage	240000
Connectivity	Screw Terminals
Phase	Single Phase
Current / Amperage Rating	400 A

**Dimensions**

Display Size	Standard Sized Product
--------------	------------------------

**General**

Color	Red
Style	Double Set Screw Male
Series	16 Series
Specifications	<ul style="list-style-type: none"> <li>• Base Compound - Thermoplastic Elastomer</li> <li>• Contact Material - Brass</li> <li>• Mounting Hole - 4x #10-32</li> <li>• Retaining Screw Material - Nylon</li> <li>• Termination - (2) 7/32 Socket Head Set Screws</li> </ul>
UPC	783585112985
Type	Receptacle
Material - Mounting Hardware	Screw Mounting
Item Type	Flanged Single
Material	Thermoplastic

**Logistics**

Pallet Quantity	1200
Carton Quantity	25

**Product Assets**

[Catalog \[English\]](#)